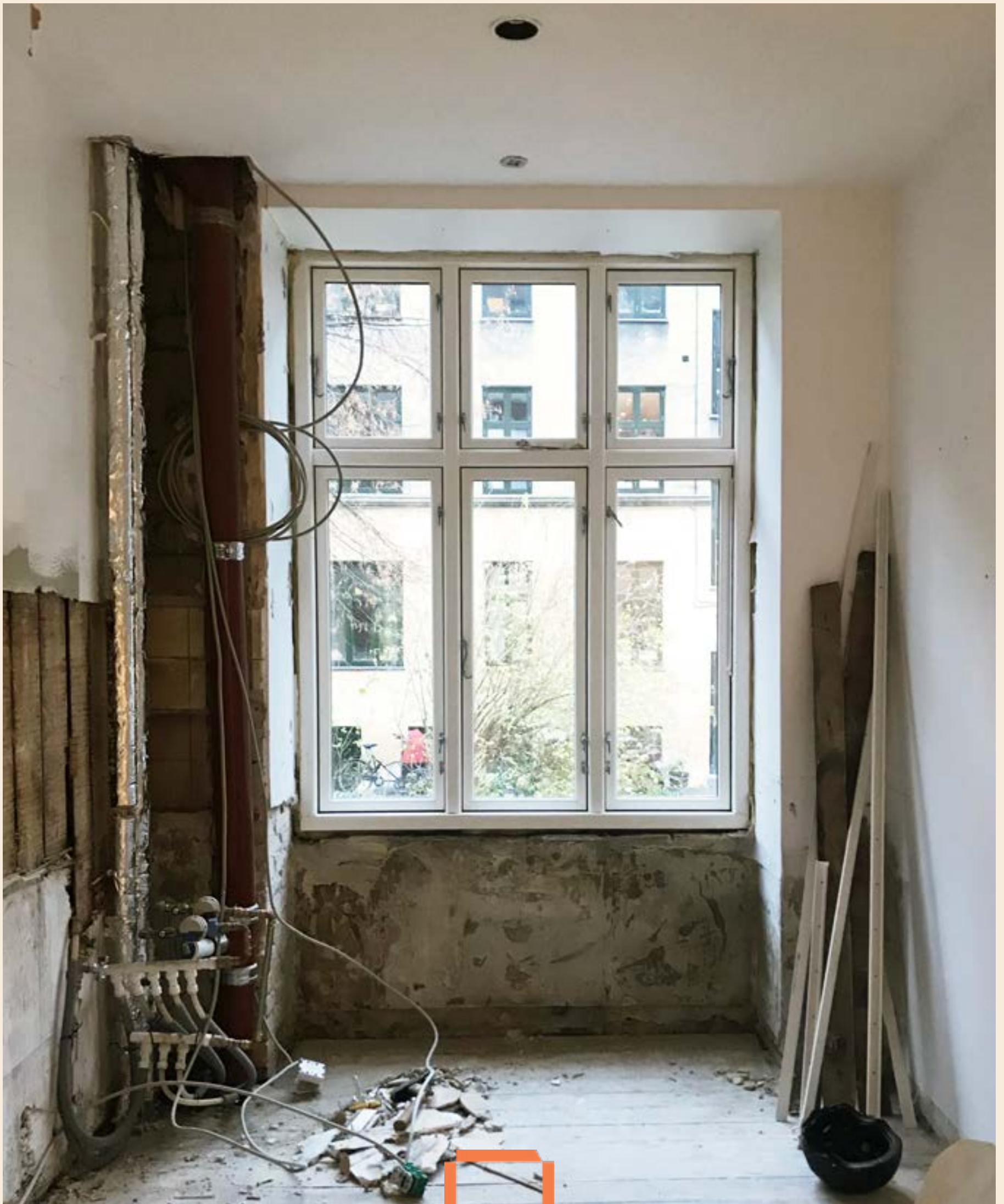


# Apartment renovation

Copenhagen



DANILA  
LAMPIS  
arkitekt

@DanilaLampisarkitekt

# **Elevating renovation in historical context.**

Celebrating the life and character of a classic Copenhagen apartment for a modern family.



After renovation





Building facade

LOCATION

Frederiksberg, Denmark

STATUS

Built and completed

YEAR

2020

CLIENT

Private, 70 m<sup>2</sup>

RESPONSIBILITIES

All phases of the project

PHOTOGRAPHY

@ROZBEH ZAVARI

*“For me, it’s important to live well, to be in a place that I feel is my Home.*

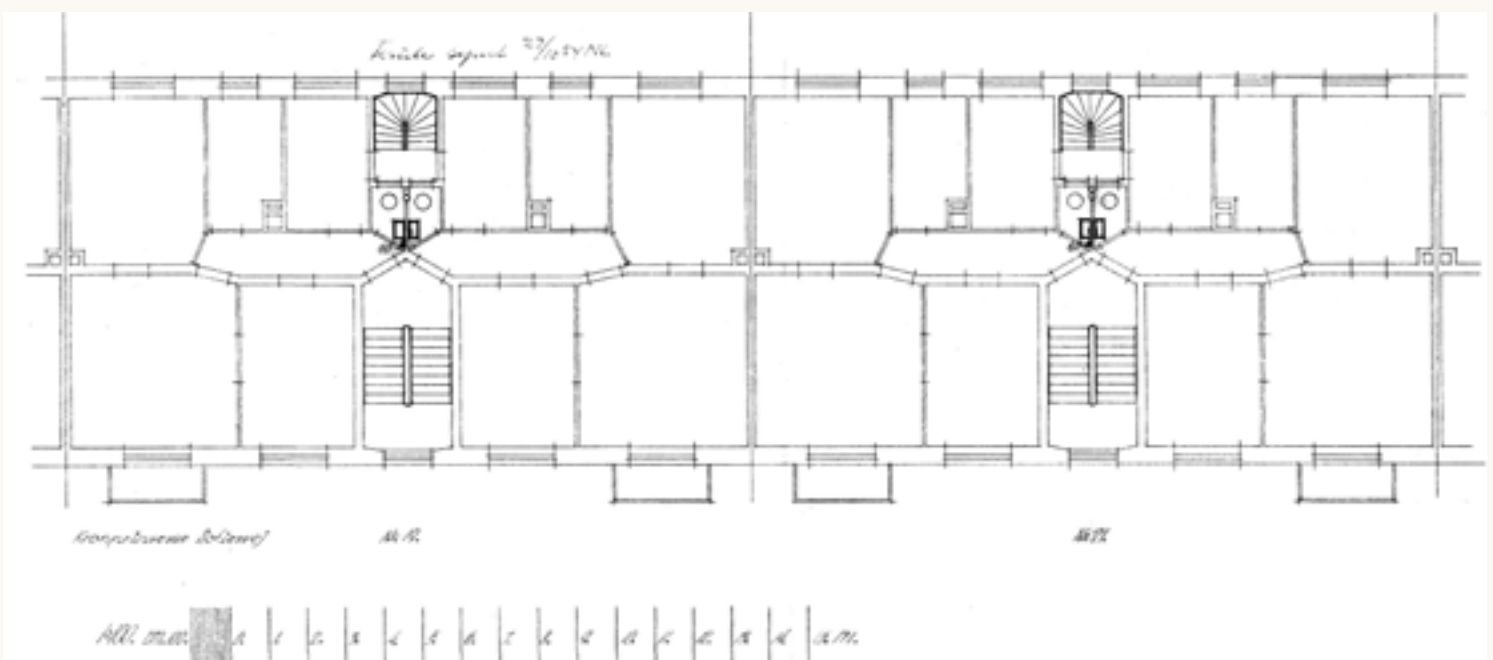
*Bright and simple living, with a good corner where you can sit in peace and read a book.*

*And also, it is important to have a place with good light to be able to work and stay.”*

*Tina – the owner*



Frederiksberg karre'



Original drawings, Frederiksberg 1929\*

\*TIPS: You can find the original drawings and case history of your own house at [www.weblager.dk](http://www.weblager.dk) or google "Byggesagsarkiv+the name of your Kommune"

## SCOPE OF PROJECT

Space research & strategy  
Pre- Design workshop  
Design concept  
Materials choice consultation  
Construction site assistance

## MAIN CHALLENGE

Tina and Birger sought help as they no longer felt their home was **functioning optimally**.

They had lived in the ground floor apartment in Frederiksberg for many years, but **no longer** they felt the apartment could accommodate the new family's **need to gather together**.

*“It was enormously-valuable to talk to someone who had that knowledge about space and dwellings.*

*There were some things which I do not think immediately myself and I would have been able to think.”*

*Tina – the owner*



# SPACE ASSESSMENT AND RECOGNIZING TODAY'S CHALLENGES

The kitchen is an enclosed room to cook and store food.  
Dark hallway and rigid plan layout.  
Kitchen and living room are disconnected rooms.



Before the renovation

**Diagnosis\*** of apartment's current strengths, weaknesses and where improvements can be implemented.

\*TIPS: Check always **water pipes and drainage** position when you install and move around the sink or the dishwasher, as well **gas line** from the basement.

## PROJECTS KEY WORDS

Elegant contrast

Family

History

Connections

Durability

Femininity aesthetic

Calm atmosphere



# PRE-DESIGN STRATEGY

Working collaboratively with Tina within a **Pre-design workshop**, we gained clarity and were able to set a **project's roadmap**.

By recalibrating an aim we would be able to tap into **the functionality and the aesthetic** of the **apartment as a whole**.





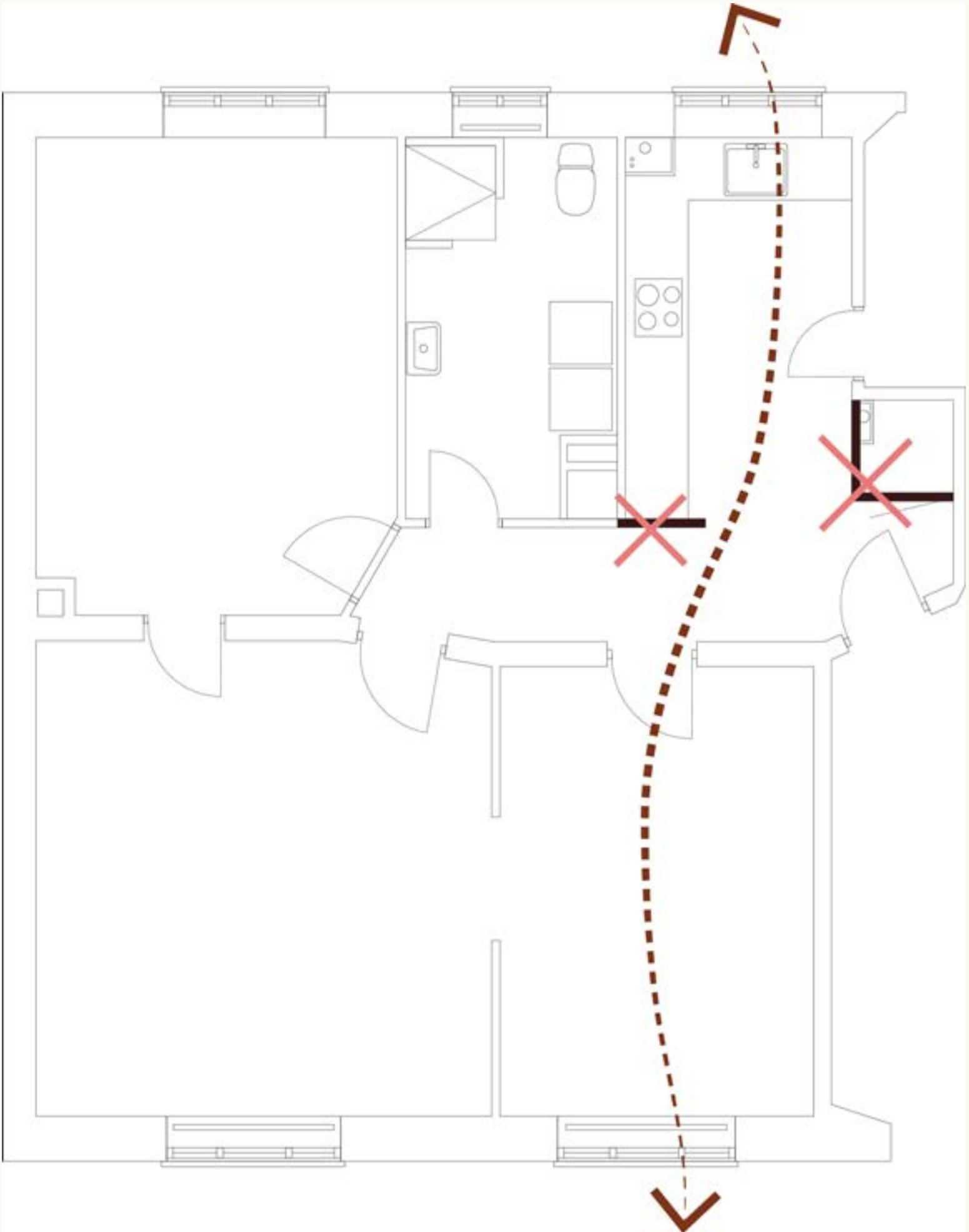




The new kitchen sitting area in front of the window.

*“I can finally drink coffee, work, talk and sit together with two chairs in front of the window, enjoying the view of our green tree.”*

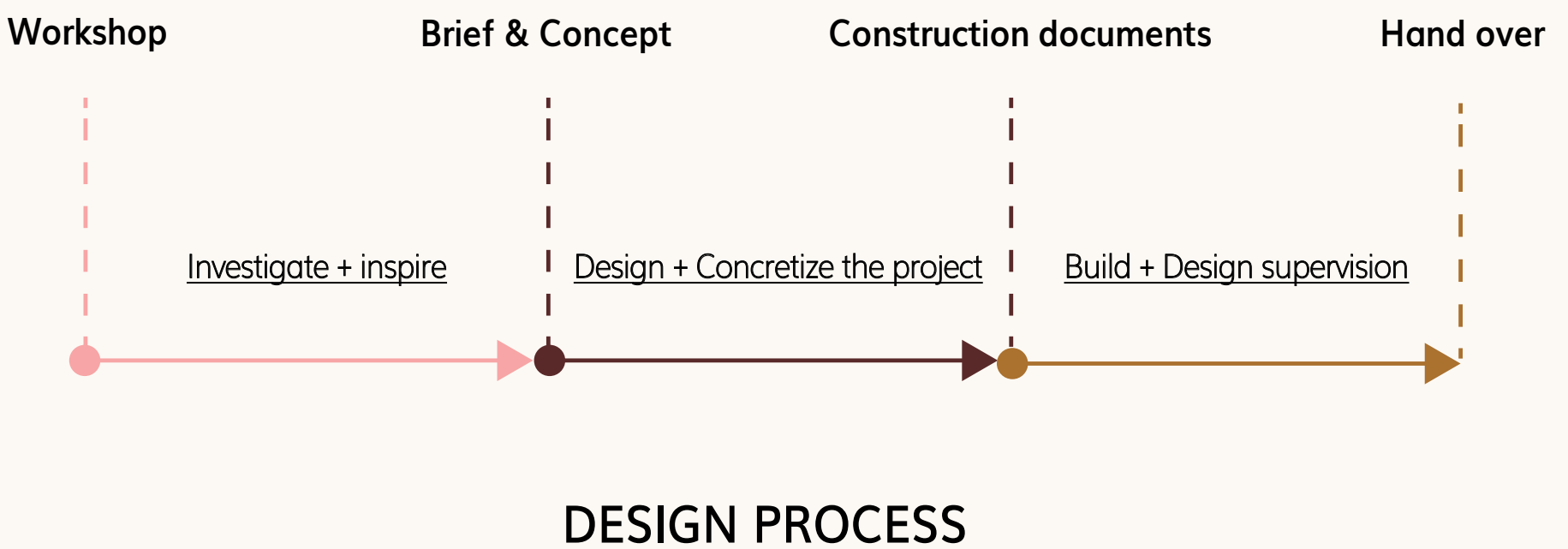
\*TIPS: If you have a small kitchen, try to see if you can **demolish light walls**. It helps the **light to cross the space** from side to side without any barriers.



[See the full Case Study here](#)

# WITH A CLEAR SPACE STRATEGY PROCESS TINA GOT:

- Clarity of why and what she wants
- Main project's functional needs
- Priorities list according to her budget





Charming Frederiksberg's apartment after renovation





Thank you!  
**Was this helpful?**  
**Join me here and get**  
**more Case Studies**  
**straight to your inbox.**



Hi, I´m Danila Lampis

Pragmatic creative with the mission of making joyful and beautiful spaces for users, communities and environment.

I´m here to help, click and share your thoughts:

[info@danilalampisarkitekt.com](mailto:info@danilalampisarkitekt.com)